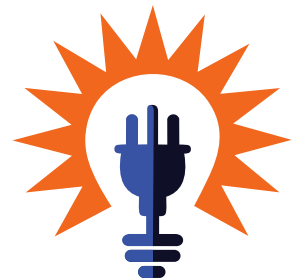


ANGLO AMERICAN

PLATINUM DISTRIBUTION CENTRE

RUSTENBURG (SOUTH AFRICA)

SOLAR PROJECT



APS™

affordable power solutions

Solar System Design & Installations

PROJECT SPECIFICATIONS:



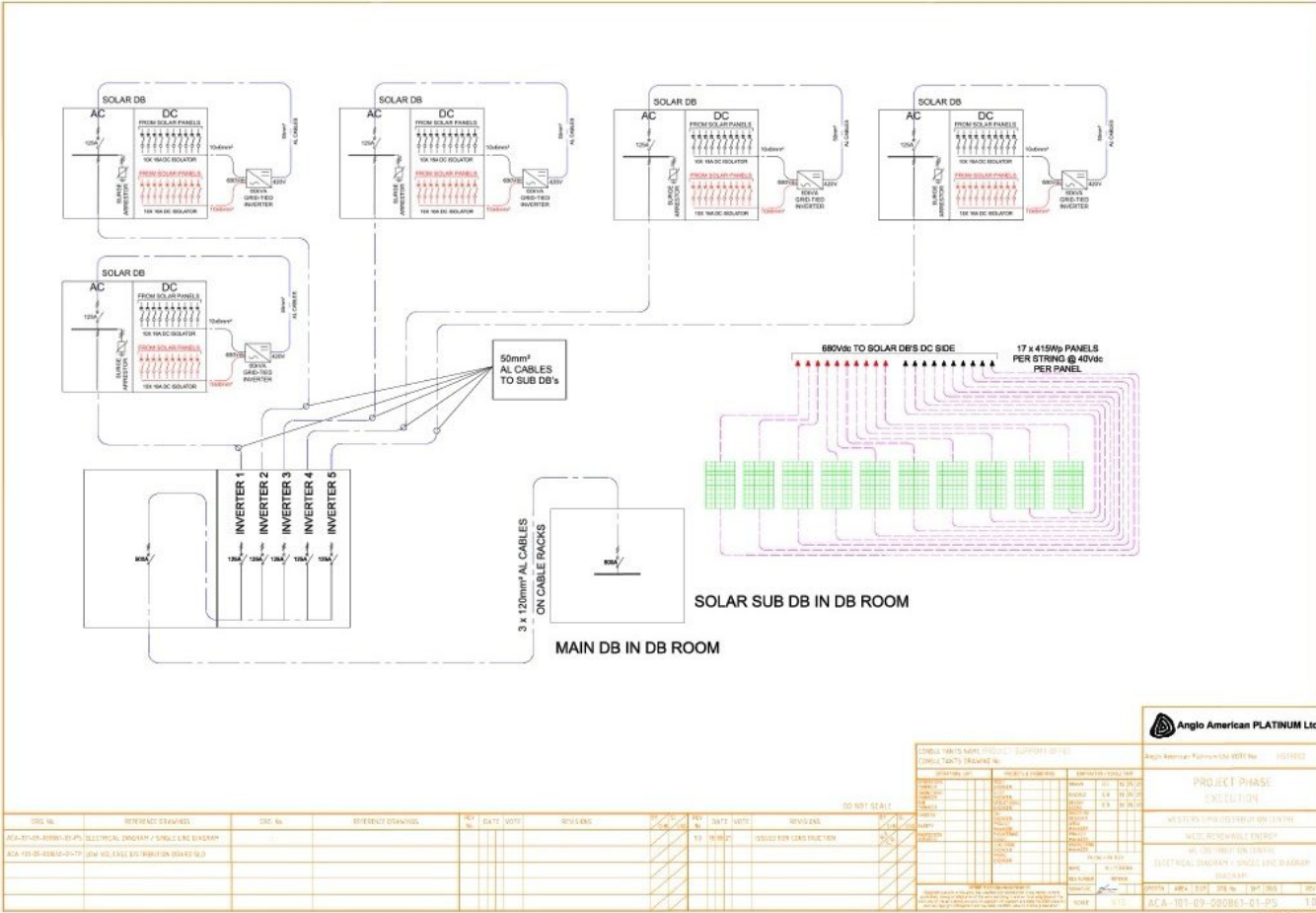
Project Manager: Brian Roberts

- **Inverters Grid-Tied: 5 x Goodwe GW60k**
- **Data Manager: 1 x SEC1000/EZL**
- **Solar Modules: 415Wp Solar Panels**
- **Installed Capacity: 350KWp**
- **Mounting System: Ground Mount**
- **AC Supply Cables: 95mm² SWA 4core Cable**
- **DC Cable Size: 6mm PV Cable**
- **Number of String inputs per Inverter: 10 Strings**
- **Area of Plant Size: 3600m²**
- **Installation Time Frame: 6 Months**

**350kwp
System**

**844
Modules**

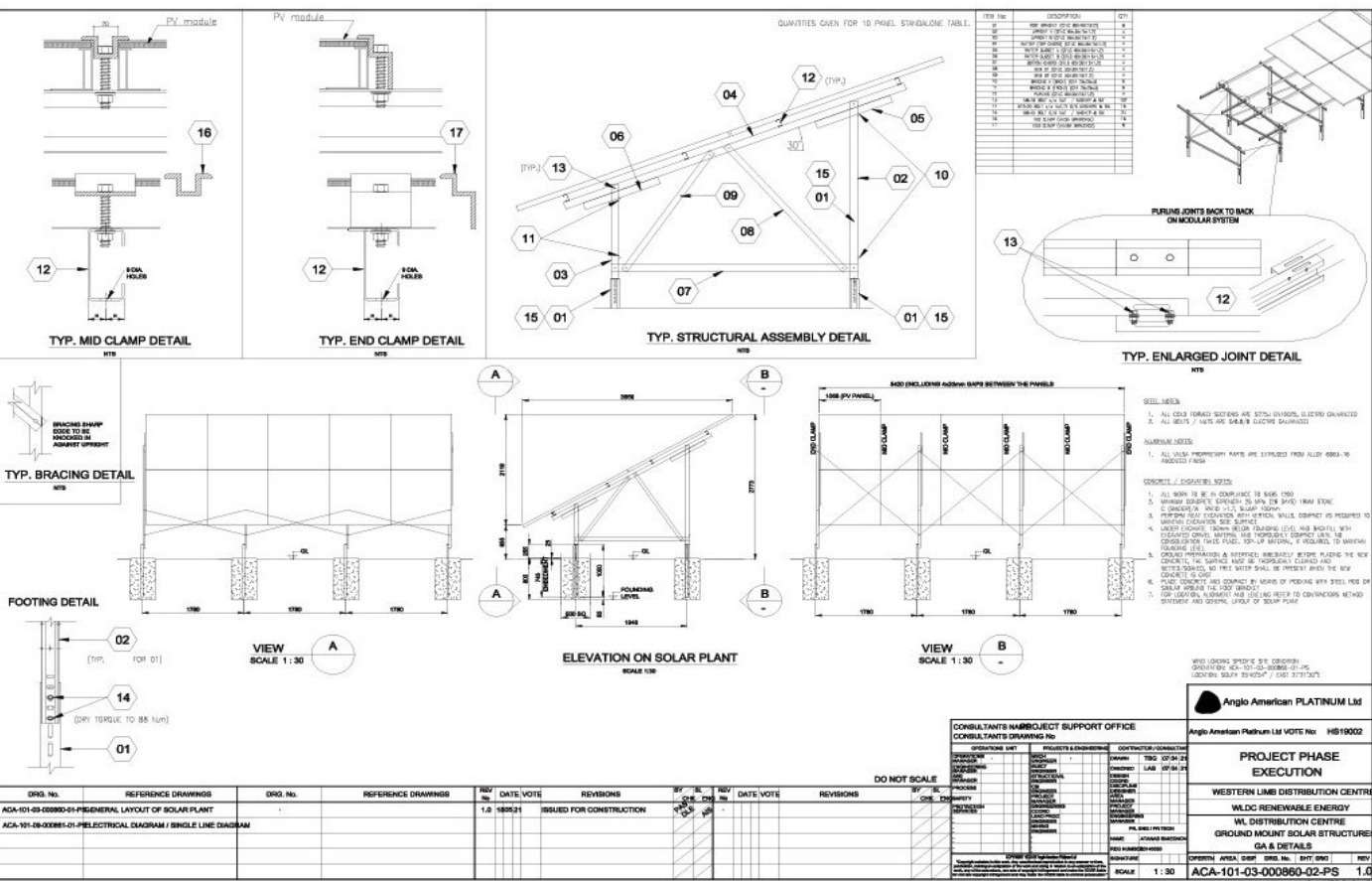
**Commercial
Ground PV
System**



Anglo American PLATINUM Ltd

CONSULTANTS DRAWING No.				PROJECT PHASE			
DATE	BY	CHKD	APP'D	EXECUTION	DESIGN	ISSUED FOR CONSTRUCTION	REVISED
19/08/2019

DRG. No.	REFERENCE DRAWINGS	DRG. No.	REFERENCE DRAWINGS	REV. No.	DATE	NOTE	REVISIONS	BY	CHKD	APP'D	DATE	NOTE	REVISIONS
ACA-101-03-00880-01-PS	ELECTRICAL DIAGRAM / SINGLE LINE DIAGRAM			1.0	18/08/2019	ISSUED FOR CONSTRUCTION							



DRG. No.	REFERENCE DRAWINGS	DRG. No.	REFERENCE DRAWINGS	REV. No.	DATE	NOTE	REVISIONS	BY	CHKD	APP'D	DATE	NOTE	REVISIONS
ACA-101-03-00880-01-PS	GENERAL LAYOUT OF SOLAR PLANT			1.0	18/08/2019	ISSUED FOR CONSTRUCTION							

CONSULTANTS DRAWING No.			PROJECT & ENGINEERING			CONTRACTOR/CONSTRUCTION		
DATE	BY	CHKD	PROJECT	ENGINEER	DESIGNER	DATE	BY	CHKD
19/08/2019

Anglo American PLATINUM Ltd

PROJECT PHASE			
EXECUTION	DESIGN	ISSUED FOR CONSTRUCTION	REVISED
...

PICTURE PROFILE:



PICTURE PROFILE:

